



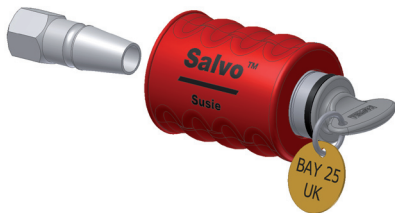
The Salvo Susie lock is a key operated mechanical locking device designed to fit on to all UK trailer, emergency brake line connectors. It's purpose is to prevent re-connection of the air brake hose, thereby immobilising the trailer. When fitted, the Salvo Susie can only be removed with the permit key. The Salvo Susie has an ergonomically designed grip. This enables the lock to be fitted and removed efficiently in wet and cold weather. The grip design provides protection to oil and grease making it ideal for harsh environments.

Salvo Susie: 005959

Operation

The Salvo Susie lock is designed as a part of a safety system to prevent accidental drive aways. The Salvo Susie interlock ensures the vehicle air line is disconnected before the loading bay door can be opened.

- 1 Disconnect the airline from the trailer Susie air line connector.
- 2 Slide the Salvo Susie lock over the exposed air line connector.
- 3 Rotate the key anti-clockwise and remove the key.



To remove the Susie lock from the trailer, insert and rotate the key clock-wise. Pull the lock off the Susie air line connector. When the operation is complete the unit should be returned to either the storage enclosure or to the issuer.

Precautions



Salvo Susie is heavy. During the course of normal use, it may become dirty, greasy and slippery. If you drop it on your foot, you may sustain serious injury. Handle with care. Wear appropriate personal protective clothing.

Maintenance

A lubrication point is provided at the opposite end of the key entry aperture. The recommended lubricant is Armna G4789 or equivalent. The recommended lubrication interval is 6-12 months as required. Keeping the Salvo Susie lock clean will ensure long and reliable service.

EC-Declaration

We, the manufacturers, declare that the components, detailed herein and placed on the market, comply with all the essential health and safety requirements applying to them.

Empowered signatory:

Mr T.C. Whelan
Managing Director



While every effort has been made to ensure the accuracy of the information provided, no liability can be taken for any errors or omission. Castell Safety International Limited reserves the right to alter specifications and introduce improvements without prior notice.

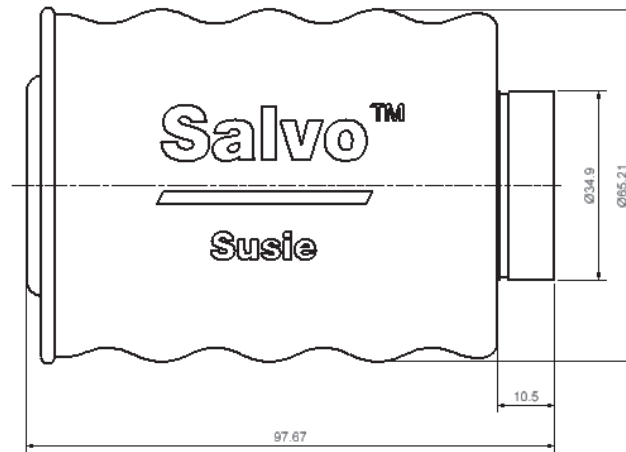
Technical Data

Working Temperature	Min -25°C (ice free) Max. +55 °C
Weight	1,0 kg
Material	Stainless steel lock complete with TPE (Thermoplastic Elastomer) sleeve
Standards	(UK) BS AU138b.C type coupling

Drawing

Dimensions:
in mm

SALVO SUSIE



Order Information

The below fields 1-3 are mandatory fields. Please advise when ordering.

	Order Information	Example
	1	
Part Number	<input type="text" value="005959"/>	<input type="text" value="005959"/>
	2	
Symbol	<input type="text"/>	<input type="text" value="25"/>
	3	
Dog Tag	<input type="text"/>	<input type="text" value="BAY 25"/>

Contact Information

Castell Safety International Ltd.
The Castell Building
217 Kingsbury Road
London, England NW9 9PQ

t: +44 (0) 20 8200 1200
f: +44 (0) 20 8905 9378
e: uksales@castell.com

Castell Safety International Ltd.
Oskar-Jäger-Strasse 137
50825 Köln
Germany

t: +49 (0) 221 1649 794
f: +49 (0) 221 1649 795
e: vertrieb@castell.com

Castell Interlocks Inc.
Suite 800
150 N Michigan Avenue,
Chicago, Illinois 60601
USA

t: +1.312.360.1516
f: +1.312.268.5174
e: ussales@castell.com

Castell Safety China
Building 1, No. 123,
Lane 1165, Jindu Road,
Minhang District,
Shanghai 201108, China.

t: +86 21 61519023
f: +86 21 61519030
e: chinasales@castell.com

While every effort has been made to ensure the accuracy of the information provided, no liability can be taken for any errors or omission. Castell Safety International Limited reserves the right to alter specifications and introduce improvements without prior notice.